

# THE POPLAR

3 Bedroom Home



Artist's Impression

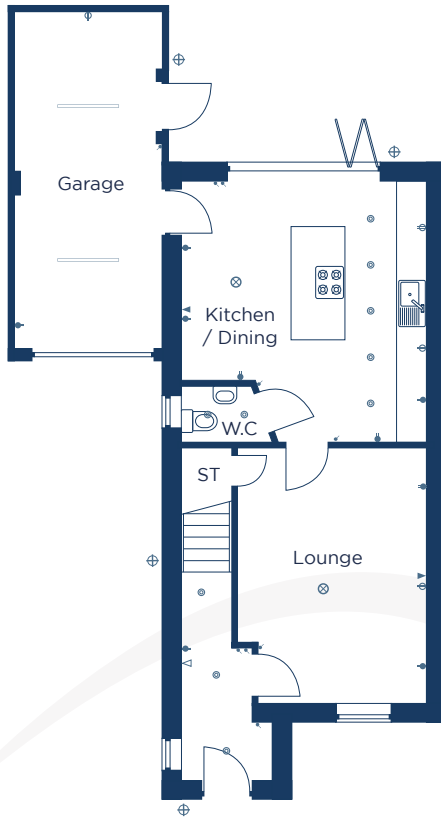
An idyllic three bedroom detached home with attached garage.

Plots: 7, 8, 91, 92, 114

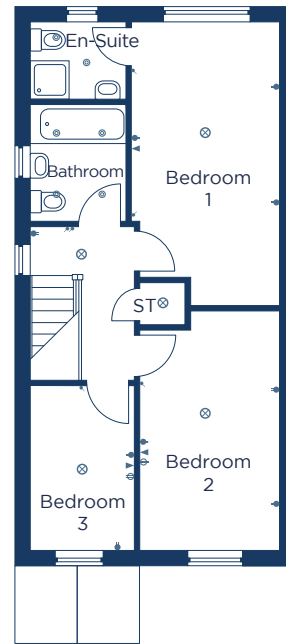
# THE POPLAR

3 Bedroom Home

Ground Floor



First Floor



**Kitchen / Dining**  
4800 x 5100      15'9" x 16'9"

**Lounge**  
3700 x 5000      12'2" x 16'5"

**W.C**  
1900 x 1100      6'3" x 3'7"

**Garage**  
2900 x 6585      9'6" x 21'7"

**Bedroom 1**  
2850 x 5500      9'4" x 18'1"

**En-Suite**  
1850 x 1500      6'1" x 4'11"

**Bedroom 2**  
2700 x 4600      8'10" x 15'1"

**Bedroom 3**  
2000 x 2725      6'7" x 8'11"

**Bathroom**  
1850 x 2250      6'1" x 7'5"

● Low level socket

⊖ High level socket

⊗ Pendant light

⊕ External light

— Fluorescent light

⊙ Spotlight

⦿ Light switch

▶ TV point

▷ BT point

**CONSUMER CODE FOR HOME BUILDERS**

[www.consumercode.co.uk](http://www.consumercode.co.uk)

[danumhomes.co.uk](http://danumhomes.co.uk)

All information contained in this leaflet is taken from design intent material and may be subject to further design development. Images are for illustration only and do not form part of any contract of sale. The dimensions and layouts given are estimated and for guidance only and are subject to chosen plot. T2 6663 Revision Date: 13.03.26 Revision: 02

The Wolds